

STATE OF MINNESOTA, }
COUNTY OF MURRAY, } ss.

I hereby certify that the within instrument was filed in this office for record on the 6TH day of FEBRUARY A.D. 20 19 at 11:00 o'clock A M. and was duly recorded as Document No. _____

Lucy C. Larson
County Recorder

Index No. E-7

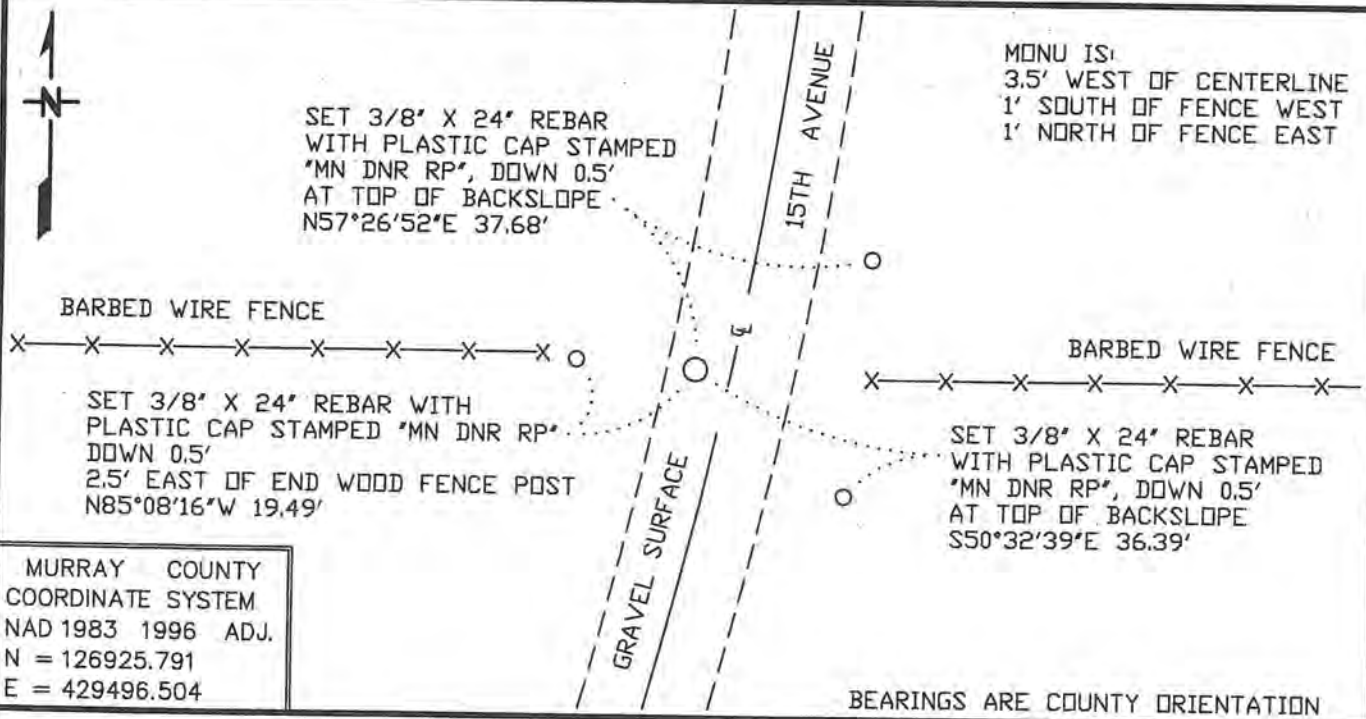
CERTIFICATE OF LOCATION OF GOVERNMENT CORNER

NORTH QUARTER Corner of Section 8, Township 105 N, Range 43 W

5TH Principal Meridian, State of Minnesota, County of MURRAY

At the corner location shown on the sketch:

- On 5/1/2018 found a 2" SQUARE CEDAR STAKE 2 FEET LONG WITH 5 1/4"
DATE POINTED STEEL SHEATH ON BOTTOM, DOWN 0.8'
 left monument as found, lowered monument, removed monument (explain)
- On 5/1/2018 Placed a 3/4" X 24" REBAR WITH PLASTIC CAP STAMPED "MN
DATE DNR LS 17003", DOWN 0.5', IN PLACE OF CEDAR STAKE WITH STEEL SHEATH



Statement of evidence for this corner location is on back of this page.

JAN 2019
NPB00139

I hereby certify that this plan, specification, or report was prepared by me or under my direct supervision and that I am a duly Licensed Land Surveyor under the laws of the State of Minnesota.

SIGNATURE Bruce W. Shepherd
BRUCE W. SHEPHERD

DATE 2/5/19

License Number 17003

North Quarter Corner of Section 8, Township 105 North, Range 43 West

The DNR Division of Lands and Minerals contacted the following for survey information:

Website - mngeo.state.mn.us for GLO plat and field notes

Website - murray-countymn.com for section and quarter section corner information

Murray County Recorder's Office

Bueltel-Moseng Land Surveying, Inc. of Marshall

Ulteig Engineering

Nyberg Surveying of Alexandria

- 1866 U.S. General Land Office notes, obtained from mngeo.state.mn.us, show the corner marked with a post, in a mound. The mound is of stones on a high ridge. The corner is shown:
40.35 chains (2663.10 feet) from adjoining section corners
- 1908 Plat Book for Moulton Township, obtained from the County Recorder's Office, shows a north-south road and property divisions east and west in the area of the corner.
- 1926 Plat Book for Moulton Township, obtained from the County Recorder's Office, shows, a north-south road and property divisions east, west and north in the area of the corner.
- 2018 May 1, the DNR Division of Lands and Minerals dug with a backhoe in the area of the corner and found a 2 inch square cedar stake, 2 feet long with a 5 ¼ inch pointed steel sheath on the bottom, standing upright, with its top down 0.8 of a foot below the surface. A search was made for the GLO stone mound but only found scattered stones in the excavation. No other evidence of a monument was found in the excavation. Replaced the found cedar stake with a ¾ inch by 24 inch rebar with a plastic cap stamped "MN DNR LS 17003" and found it to be:
3.5 feet west of the centerline of a Township Road
1 foot south of a fence west
1 foot north of a fence east
2669.05 feet from the northeast corner of Section 8

Analysis of the above information led the DNR Division of Lands and Minerals to conclude that the ¾ inch by 24 inch rebar with a plastic cap stamped "MN DNR LS 17003" set in place of a found 2 inch square cedar stake marks the location of the corner.